

# LSD Deputy Report

114 days to Beam

65 days to HCO

June 19<sup>th</sup> - July 3<sup>rd</sup>

Bob May

July 3<sup>rd</sup> – today

Dianne Owens

# LSDD Rotation Summary

- **FML:**
  - Injector dehumidifier demo and replaced. Pressure tested & passed.
  - N/SLinac HVAC - AHUs for new 12GeV RF zones cooling placed (ducting and installation substantially completed). SLinac penetrations for return air & relief dampers. Electrical & Control cont. in N&SLinacs.
  - MCC renovations continued.
  - XD tagger ramp handrails installed
  - Cont. CHL impeller trimming
  - Chilled water loop controllers replaced
- **Cryo:**
  - maintenance - 2K Coldbox trips, ESR water pump
  - Supporting XD & CM commissioning
- **Metrology (S&A):**
  - Ongoing: OLOR & 2R 2b, 2T line 2a,
  - Completed: 1R 2b, 1S components 2a, MXXAR01, MZX8R04, 2R: ZA & XU dipoles 2a, NL 28 & DP station
  - 1S: YB Magnets 2a
- **Installation:**
  - Pedestals installed/grouted 2E+ region
  - Many girders/stands/ dipoles installed (including lifting plates)
    - Magnets: 1S YBBS04 & YBBS06, West Arc stack 16 completed!
    - Girders: 1L28, 8T07, AS08 & 8a, 8R02 & 3
    - Started XP01 & XP02 magnets (west arc) & YBS04 1S region
  - Mu metal hoods fabricated (OL region)
  - LCW connections: Warc, 2S, 1S regions, 2T & SL girders, Started inst. WArc pass 10 LCW manifolds.
  - Beam line installed in many places - OL/OR now under vacuum, beam tubes for 1st spreader leak tested, 1S region
  - BSY SB LCW tie-in completed

# LSDD Rotation Summary

- **PSS:** recovery, extending system to Hall D, PM/Inspections continuing
- **I&C:**
  - 12GeV BPM strip line cables in 5C & BS locations
  - Upgraded Inj Network
  - I12GeV TVBS01 viewer & IHABS01 harp assembly installations
  - BPMs 1S/3S/5S00 electronics installation
  - Temperature sensor work in Earc near completion
- **DC Power:**
  - Cont. 0L & 2R region corrector magnet connections
  - Power Supplies in SL SB, Trim racks, W2 box supply installation & tested
  - Klixon cables - XSEP10T, MYA6T01A, and MYA8T01A in W2.
  - Power supplies E1
  - Power suppl installed BSY/SB
  - W2 20A Trim Rack DC terminations completed
  - Starting 20 Amp Trim Power Supply Cable Pull In The BSY
  - Cont. XD Tagger ramp cable pulls
- **Cont. RF & SRF recovery/re-commissioning (See SRF report for details)**
  - 1L25 completed & ready for commissioning
- **XD:**
  - Preparing solenoid magnet for commissioning & mag field mapping
  - Installing FCAL dark room and cabling, electric power transformers, electronics racks, cable trays
  - Outfitting control room/conference area

## **SAD Calendar:**

<http://accweb.acc.jlab.org/calendar/view-outlook?year=2013&week=28>

### **Snip of mid-week LSDD rotation:**

- High task loading both in the tunnel and above ground during “day” shift
- Tunnel lock-up at 1530 for CM SRF recovery
- Facilities Management installation work in NL and SL buildings to cool new RF zones

Activities conducted against a back-drop of preparations for and system reviews held by Ops.

Injector dehumidifier under installation & installed





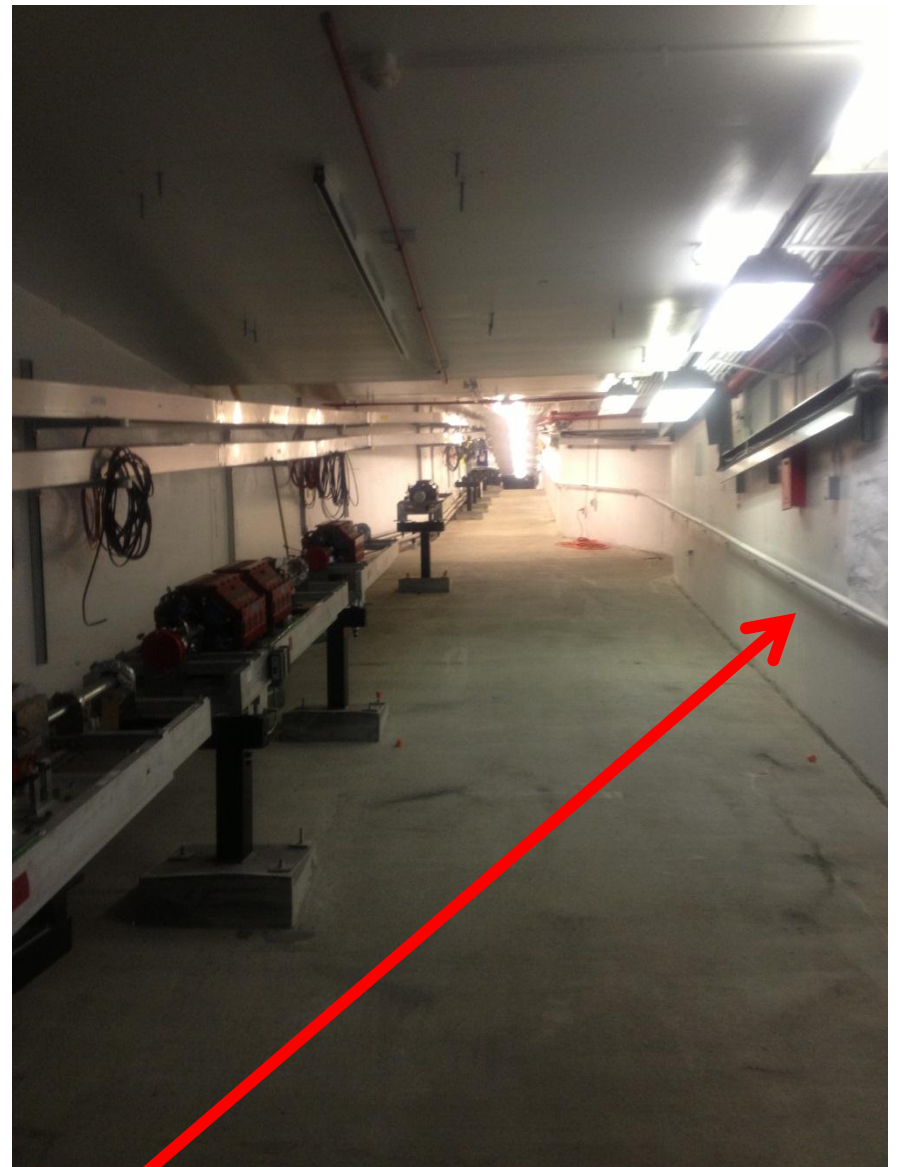
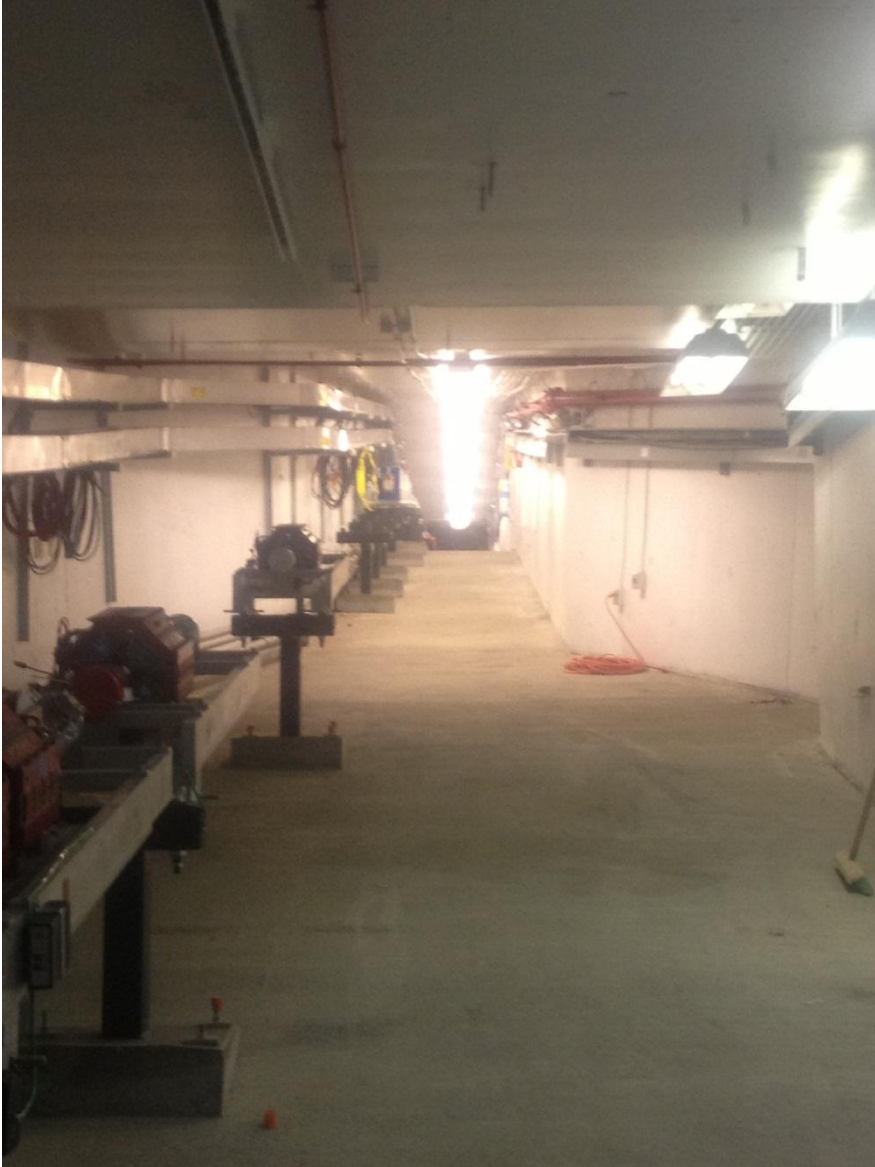
AHU placed on pad behind SL – still need electrical, cooling hookup



SL SB new RF Zone cooling ductwork insulation underway



# Can You Spot the Difference?



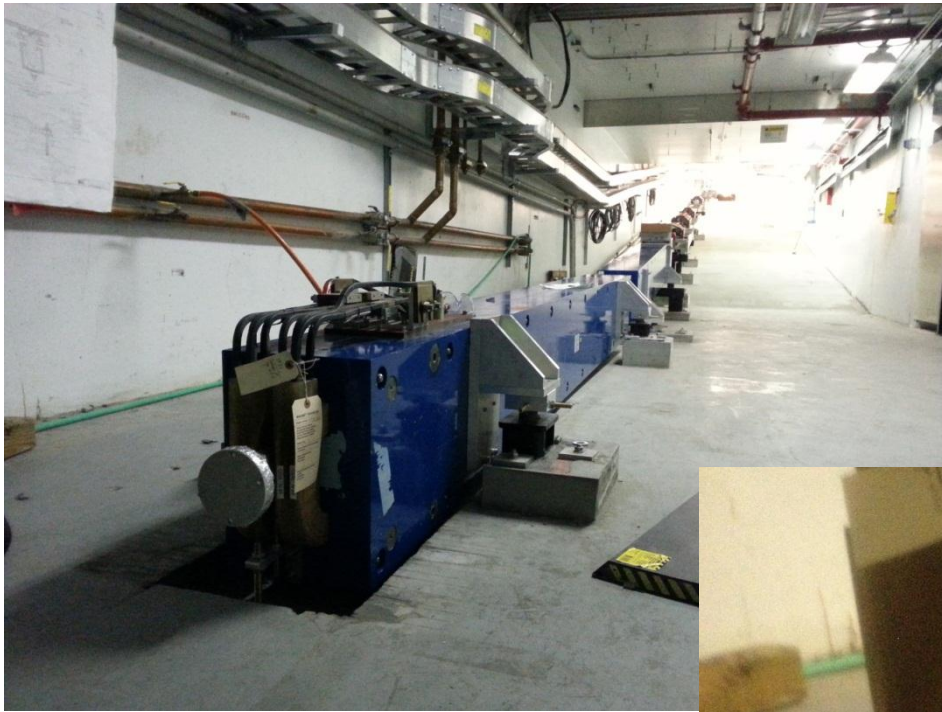
XD Tagger Ramp Handrails Installed





XD line 4 meter dipole installation

XD line transition from SL to Tagger ramp





2R + ZA's in place



West Arc Stack 16 Magnets in place!



LCW installation in 1S



Pedestals 2E+ grouted



West Arc LCW connections  
to magnets



ARC 1 and ARC 3  
undergoing alignment

ARC 10 undergoing alignment

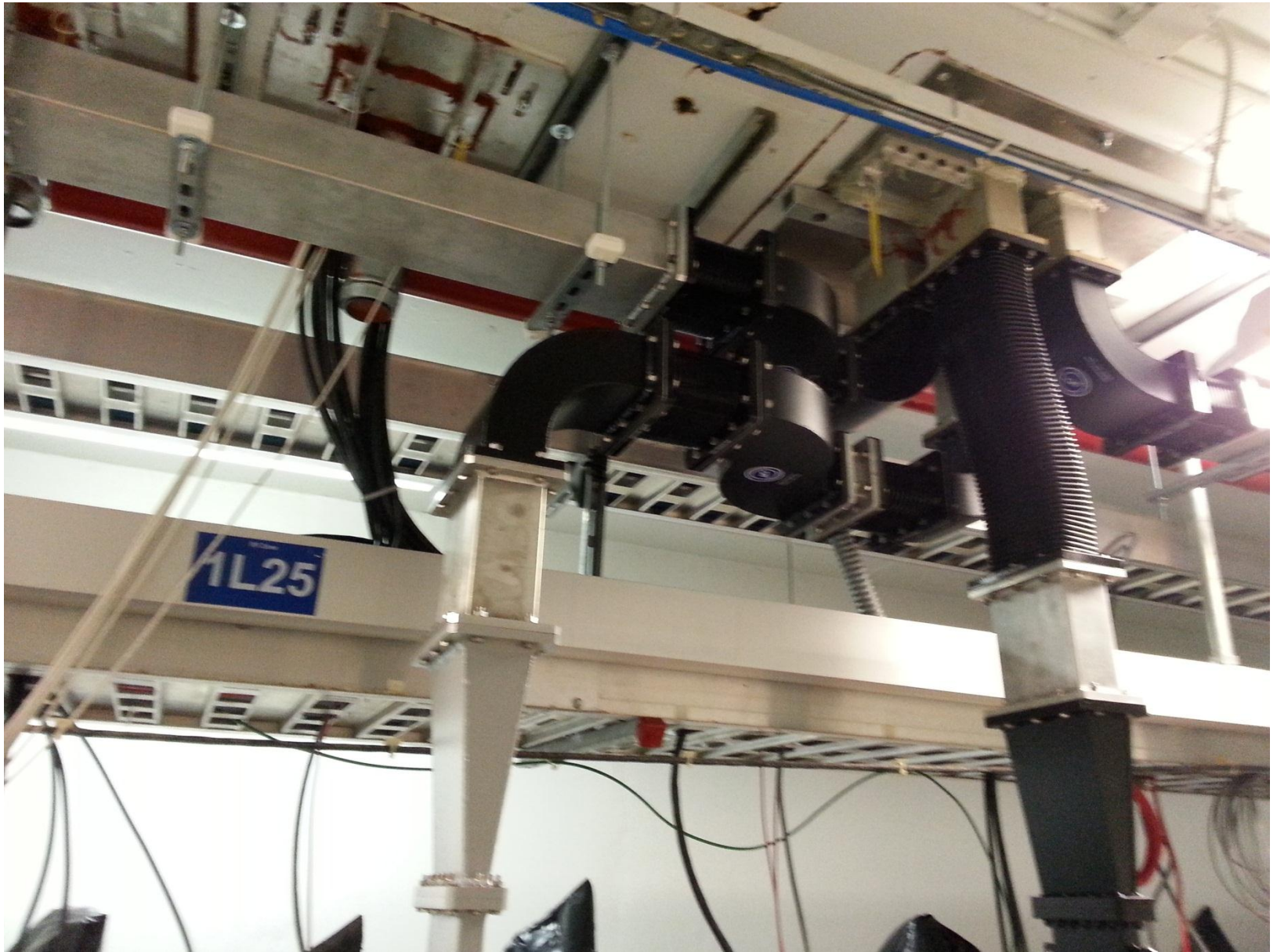




0L & 2R alignment



2T alignment



1L25 WG install underway

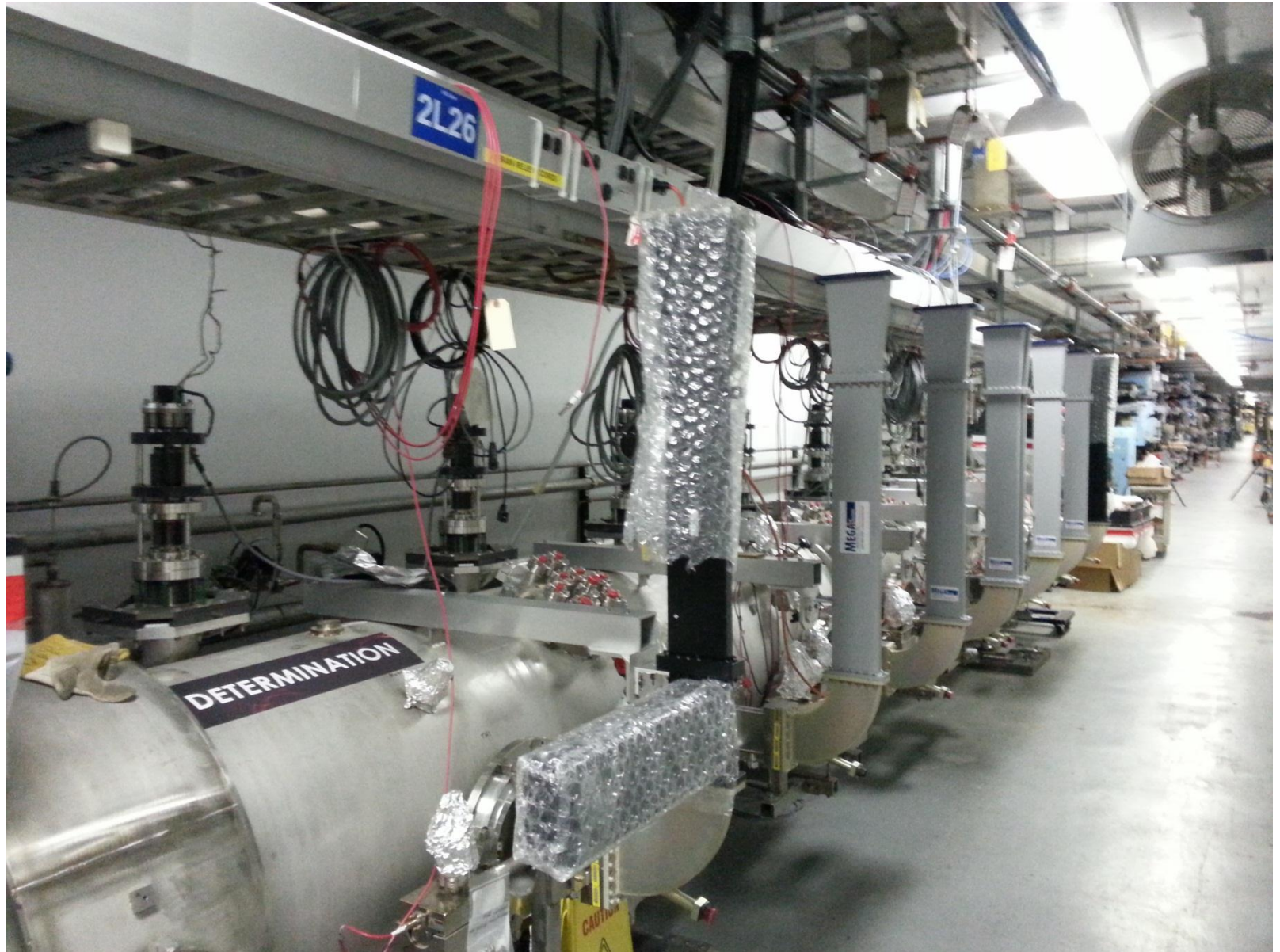




1L24/25 WG party



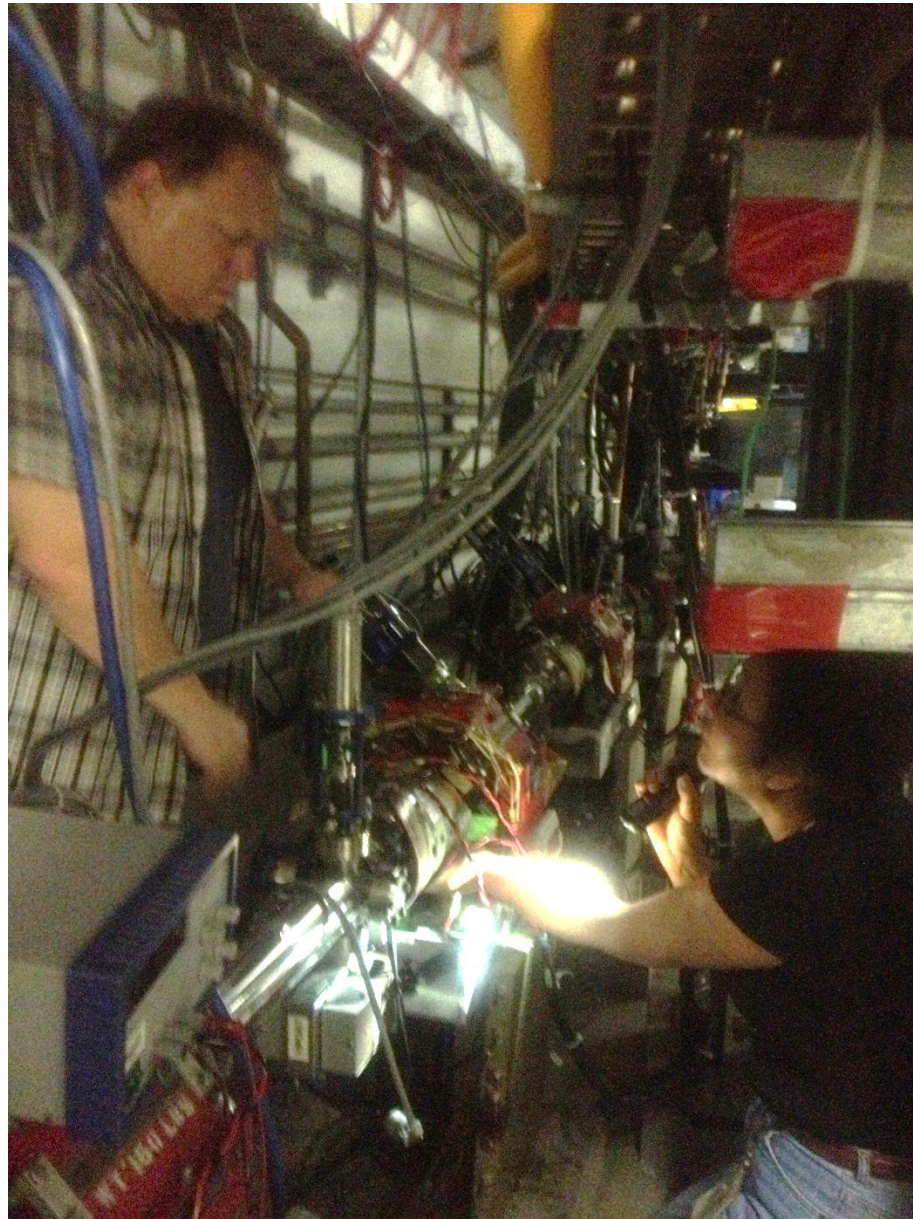
Drury emerges during the day



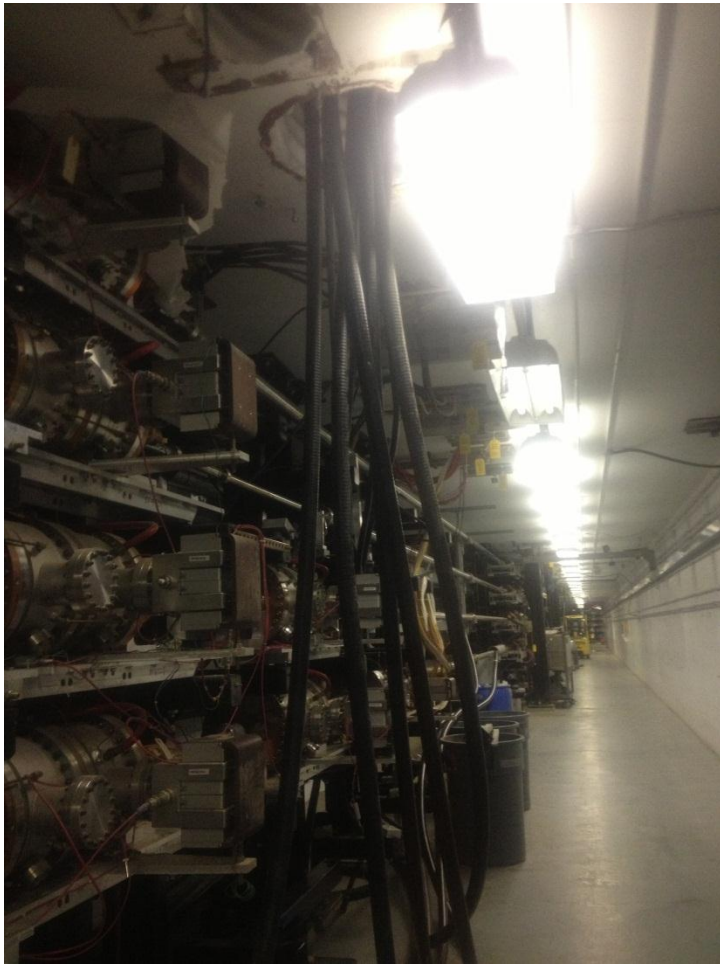
Last C-100



W2 after cleanup  
party in preps for  
trim rack and  
Power Supply  
installation



0L region magnet connections – tight space!



2S (W2) Heliax  
installation



Hall D counting house (conference room outfitting)



Hall D counting house (control room outfitting)